

**U.S. Army Corps of Engineers
Northwestern Division**

Missouri River Basin Water Management



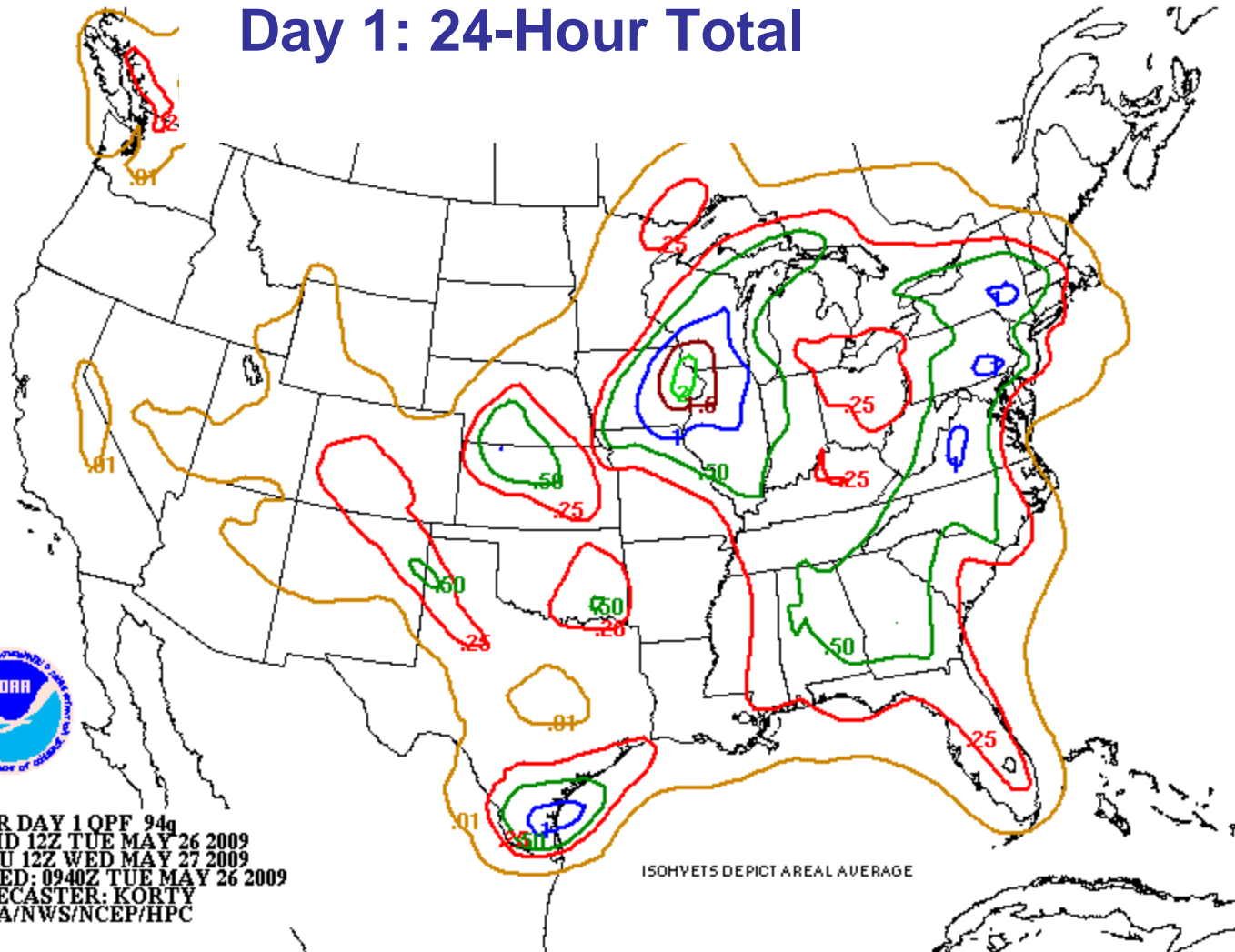
Spring Pulse Update May 2009

Updated: May 26, 2009



HPC

Day 1: 24-Hour Total



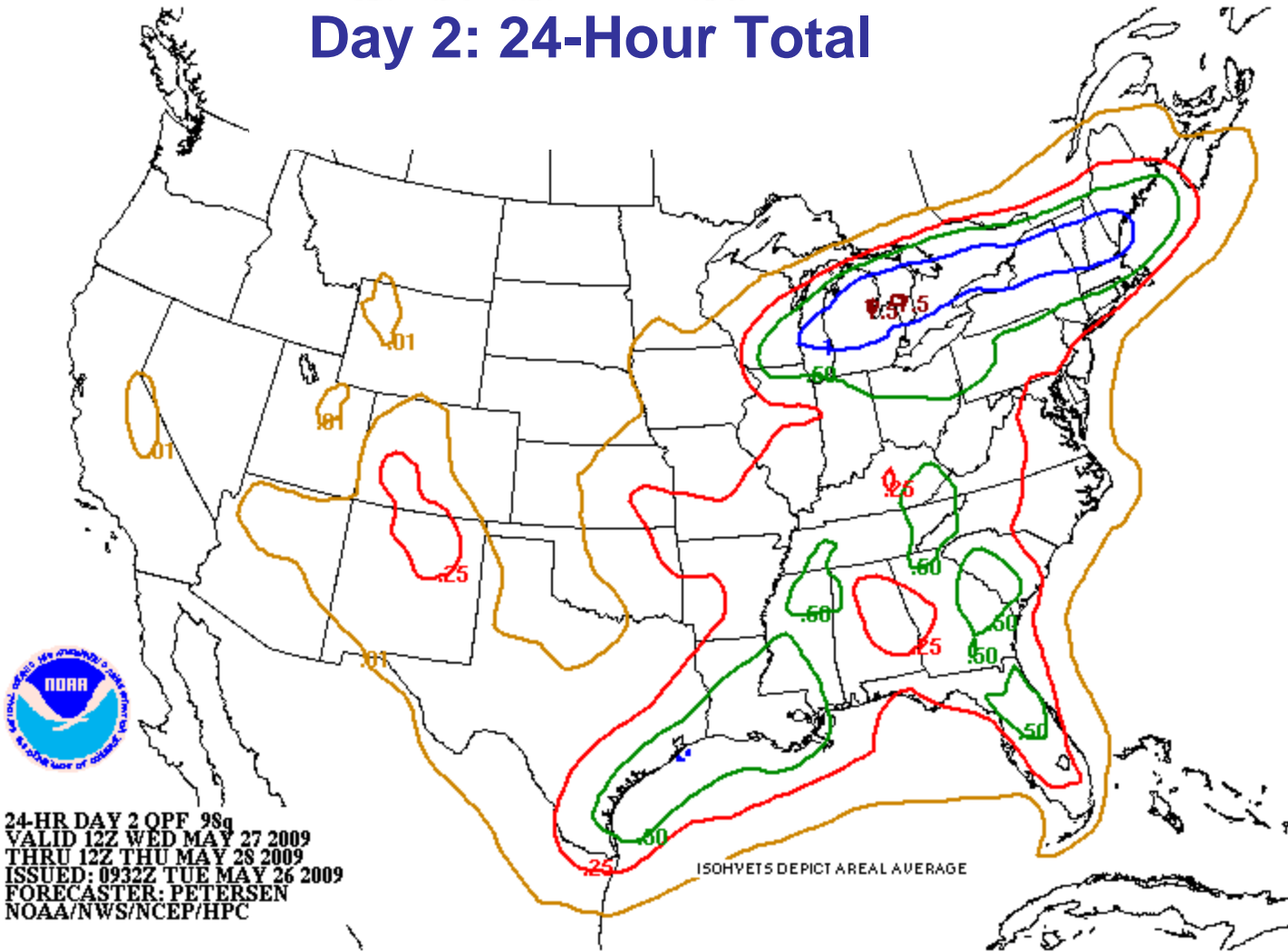
24-HR DAY 1 OPF 94g
 VALID 12Z TUE MAY 26 2009
 THRU 12Z WED MAY 27 2009
 ISSUED: 0940Z TUE MAY 26 2009
 FORECASTER: KORTY
 NOAA/NWS/NCEP/HPC

ISOHYETS DEPICT AREAL AVERAGE



HPC

Day 2: 24-Hour Total



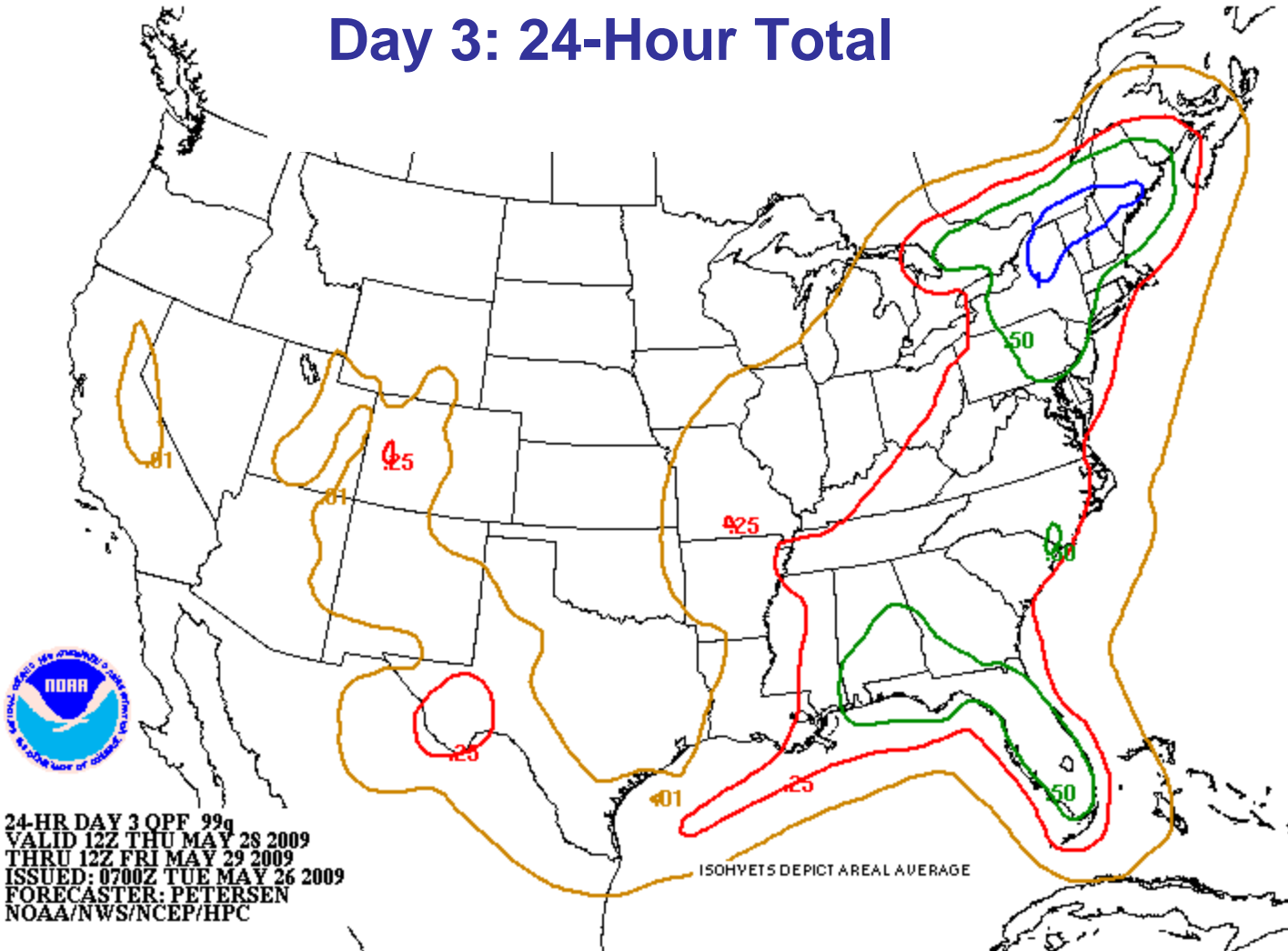
24-HR DAY 2 OPF 98g
 VALID 12Z WED MAY 27 2009
 THRU 12Z THU MAY 28 2009
 ISSUED: 0932Z TUE MAY 26 2009
 FORECASTER: PETERSEN
 NOAA/NWS/NCEP/HPC

ISOHYETS DEPICT AREAL AVERAGE



HPC

Day 3: 24-Hour Total

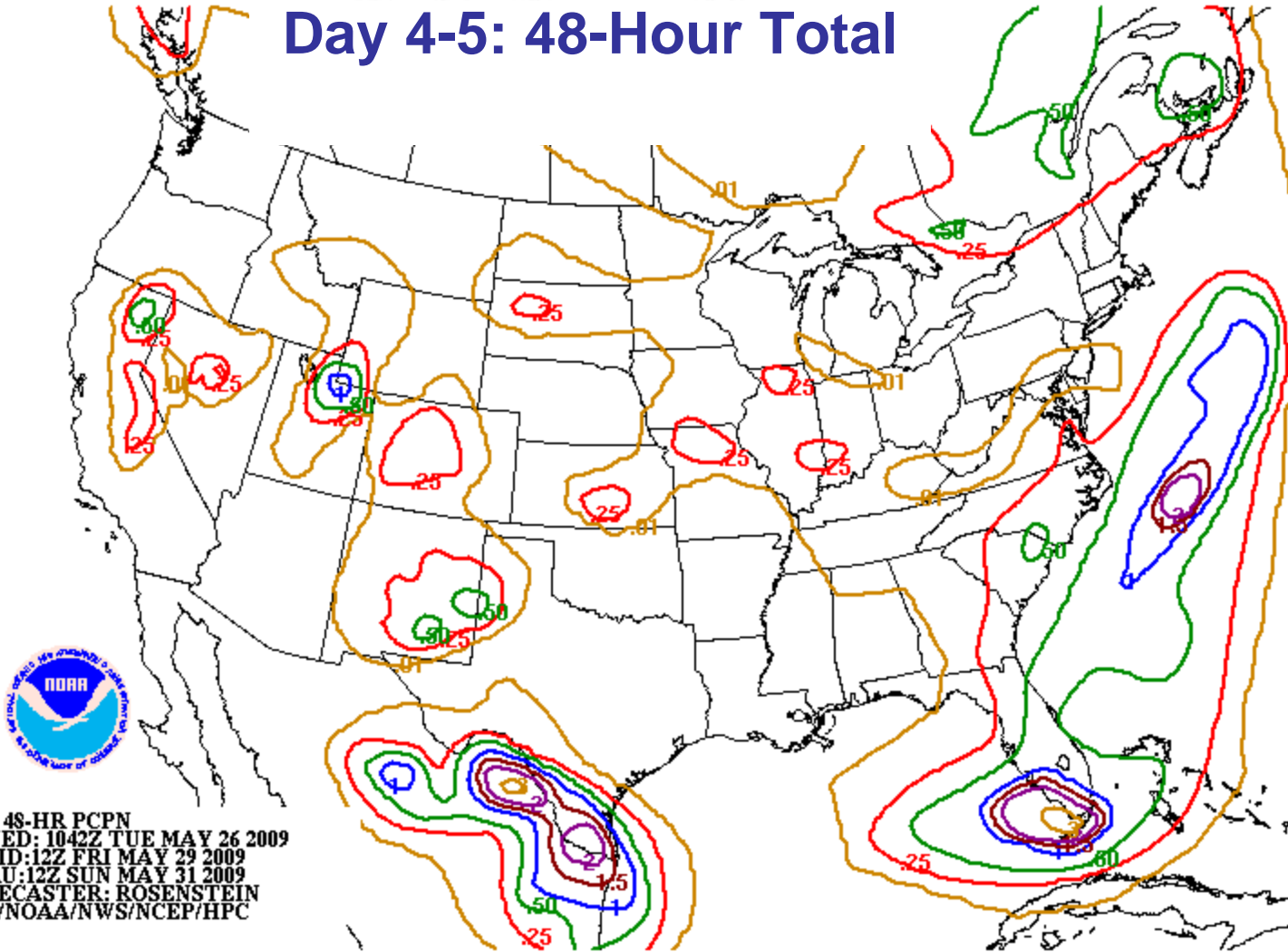


24-HR DAY 3 OPF 99g
 VALID 12Z THU MAY 28 2009
 THRU 12Z FRI MAY 29 2009
 ISSUED: 0700Z TUE MAY 26 2009
 FORECASTER: PETERSEN
 NOAA/NWS/NCEP/HPC



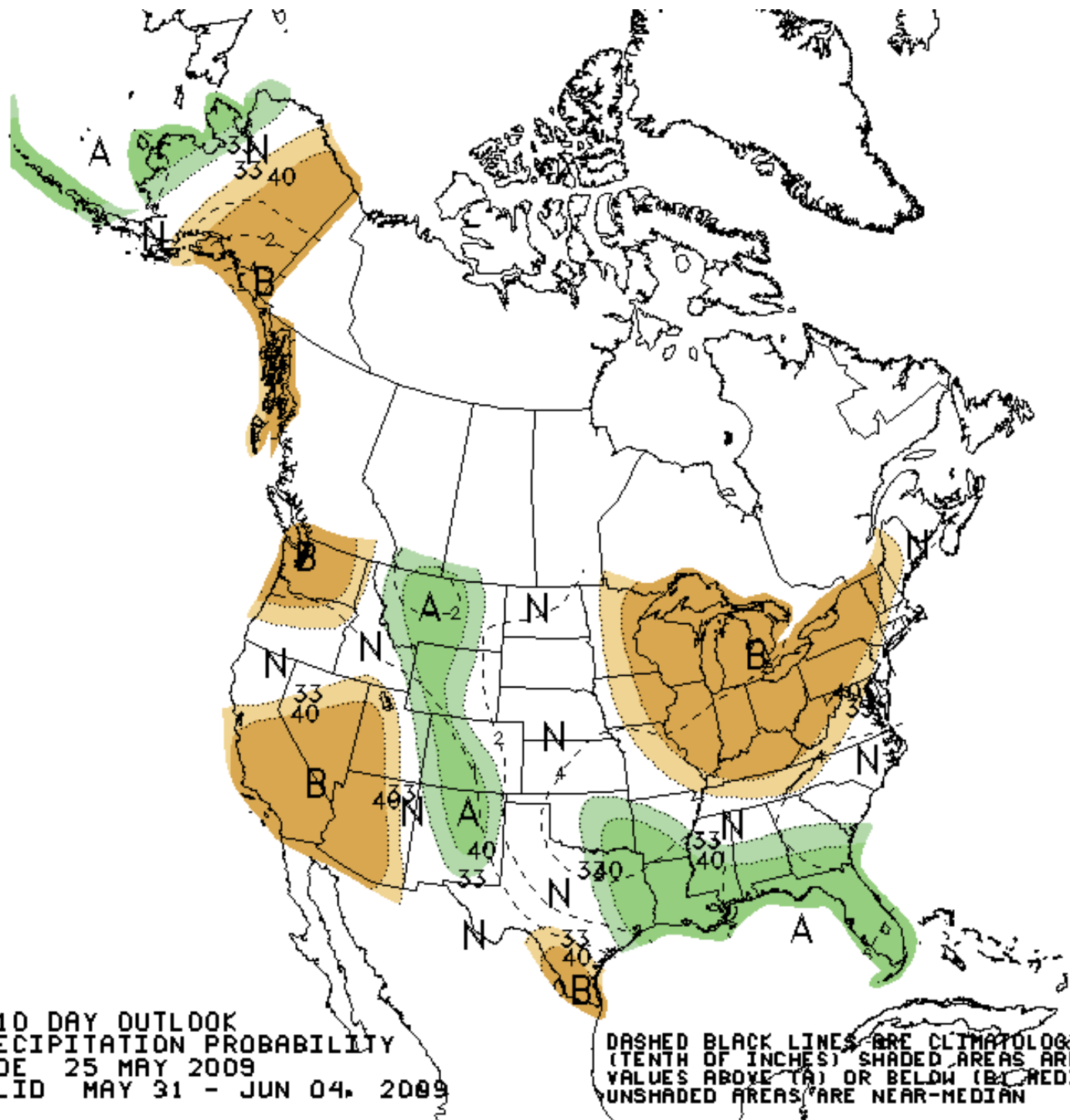
HPC

Day 4-5: 48-Hour Total



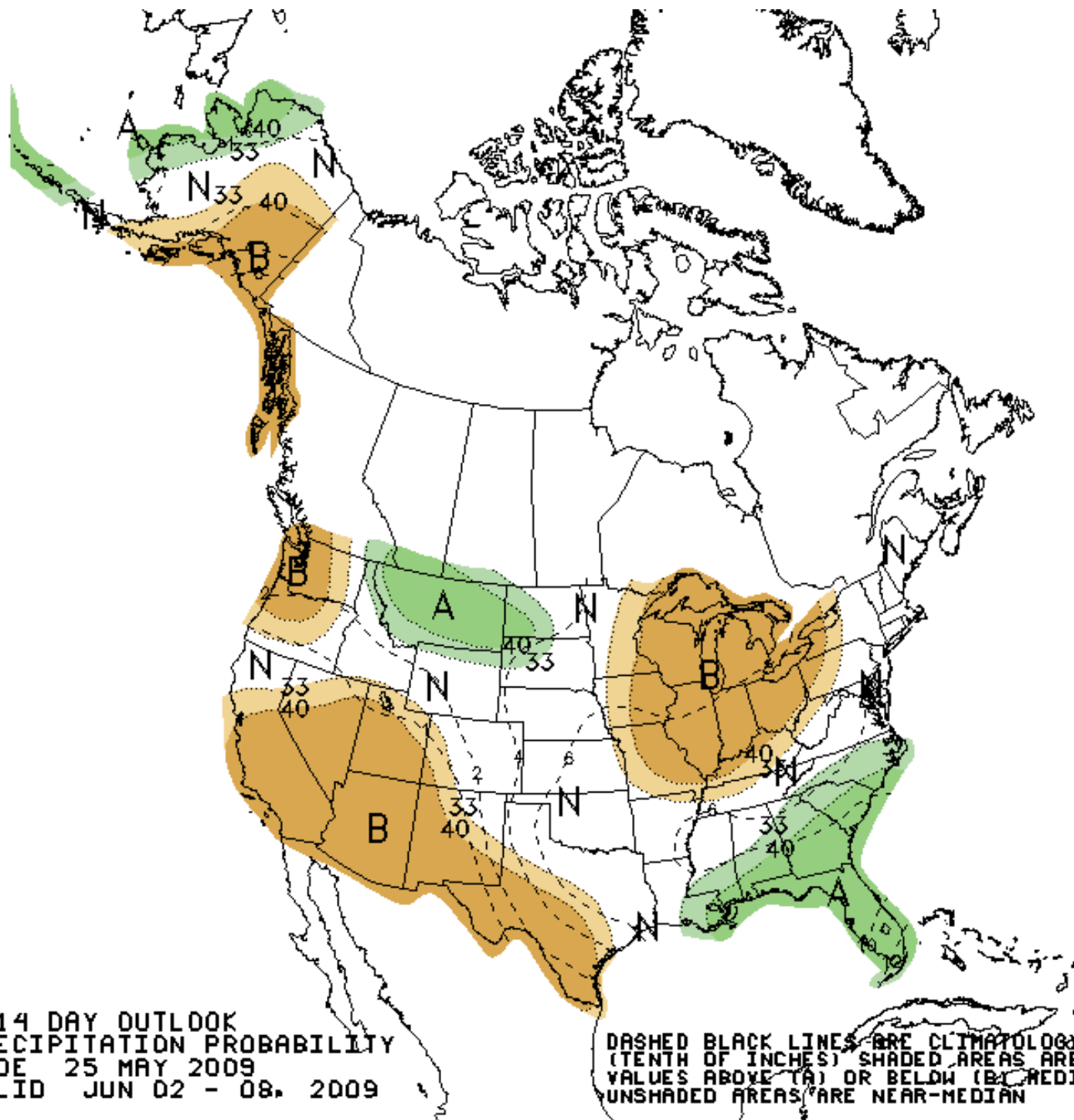
HPC 48-HR PCPN
ISSUED: 1042Z TUE MAY 26 2009
VALID: 12Z FRI MAY 29 2009
THRU: 12Z SUN MAY 31 2009
FORECASTER: ROSENSTEIN
DOC/NOAA/NWS/NCEP/HPC





6-10 DAY OUTLOOK
 PRECIPITATION PROBABILITY
 MADE 25 MAY 2009
 VALID MAY 31 - JUN 04, 2009

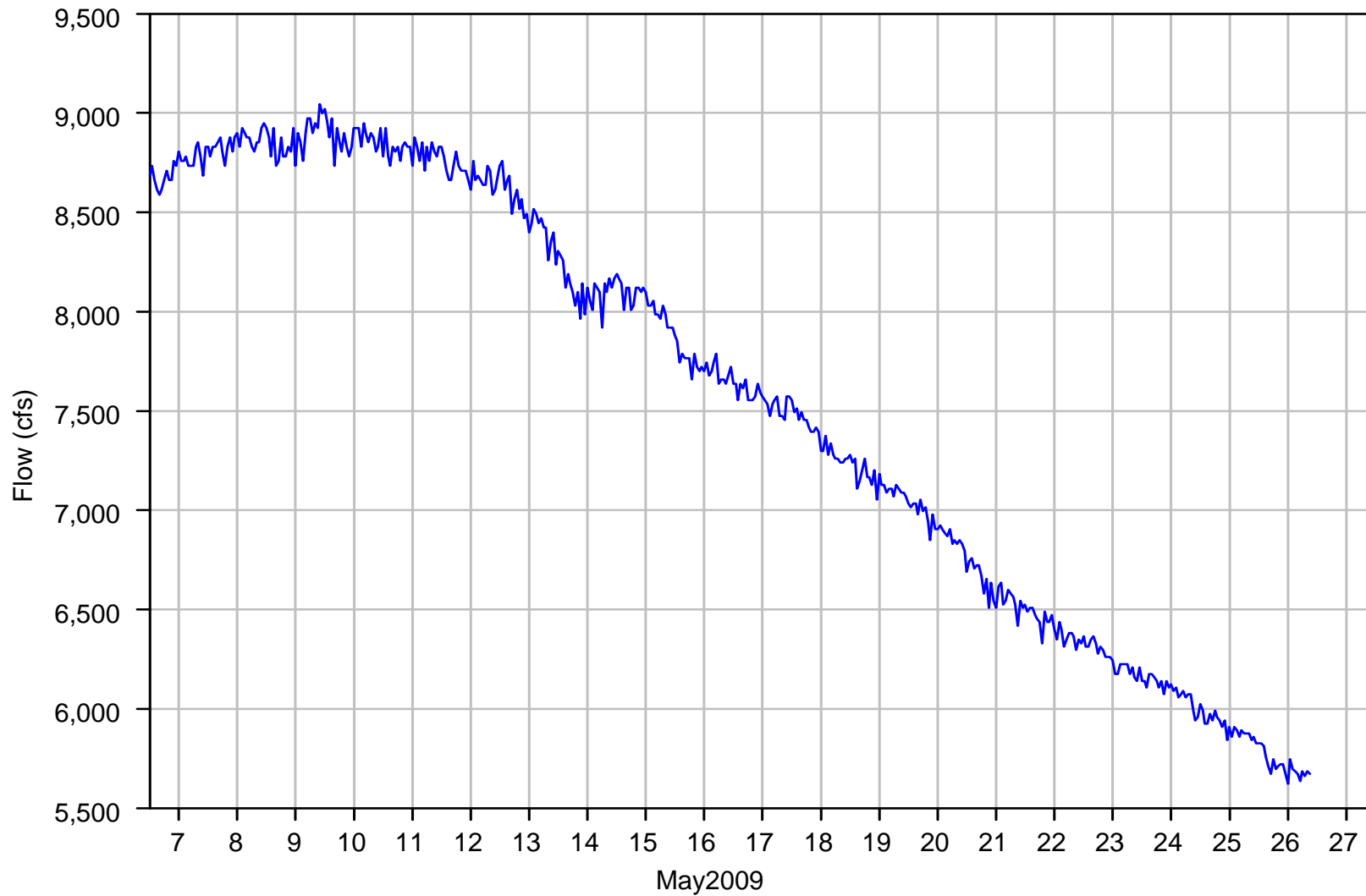
DASHED BLACK LINES ARE CLIMATOLOGY
 (TENTH OF INCHES) SHADED AREAS ARE FCS
 VALUES ABOVE (A) OR BELOW (B) MEDIAN
 UNSHADED AREAS ARE NEAR-MEDIAN



8-14 DAY OUTLOOK
 PRECIPITATION PROBABILITY
 MADE 25 MAY 2009
 VALID JUN 02 - 08, 2009

DASHED BLACK LINES ARE CLIMATOLOGY
 (TENTH OF INCHES) SHADED AREAS ARE FCS
 VALUES ABOVE (A) OR BELOW (B) MEDIAN
 UNSHADED AREAS ARE NEAR-MEDIAN

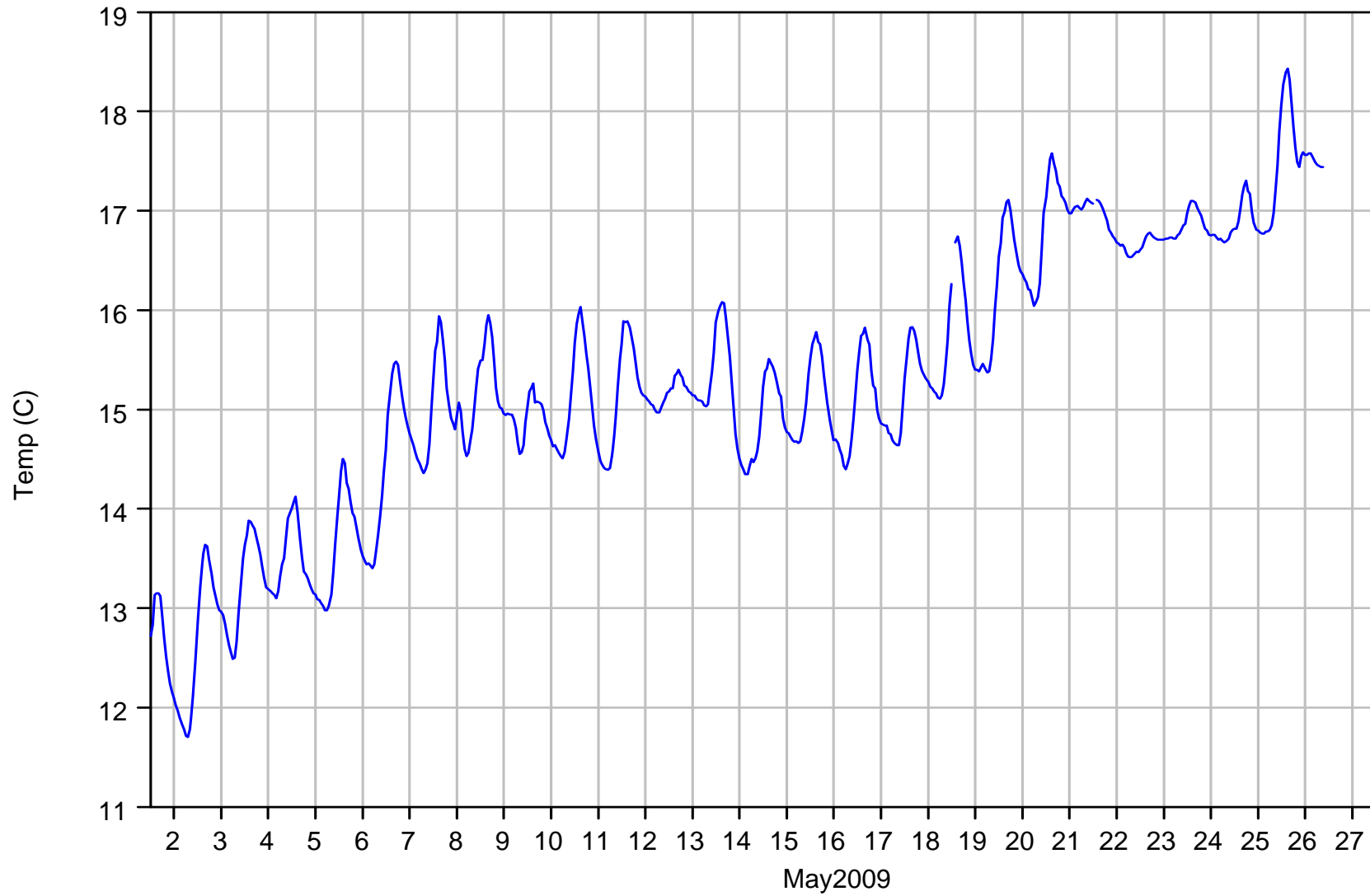
James River at Scotland, South Dakota Discharge



— SCSD-Scotland-James Combined-rev Flow

Yankton, South Dakota

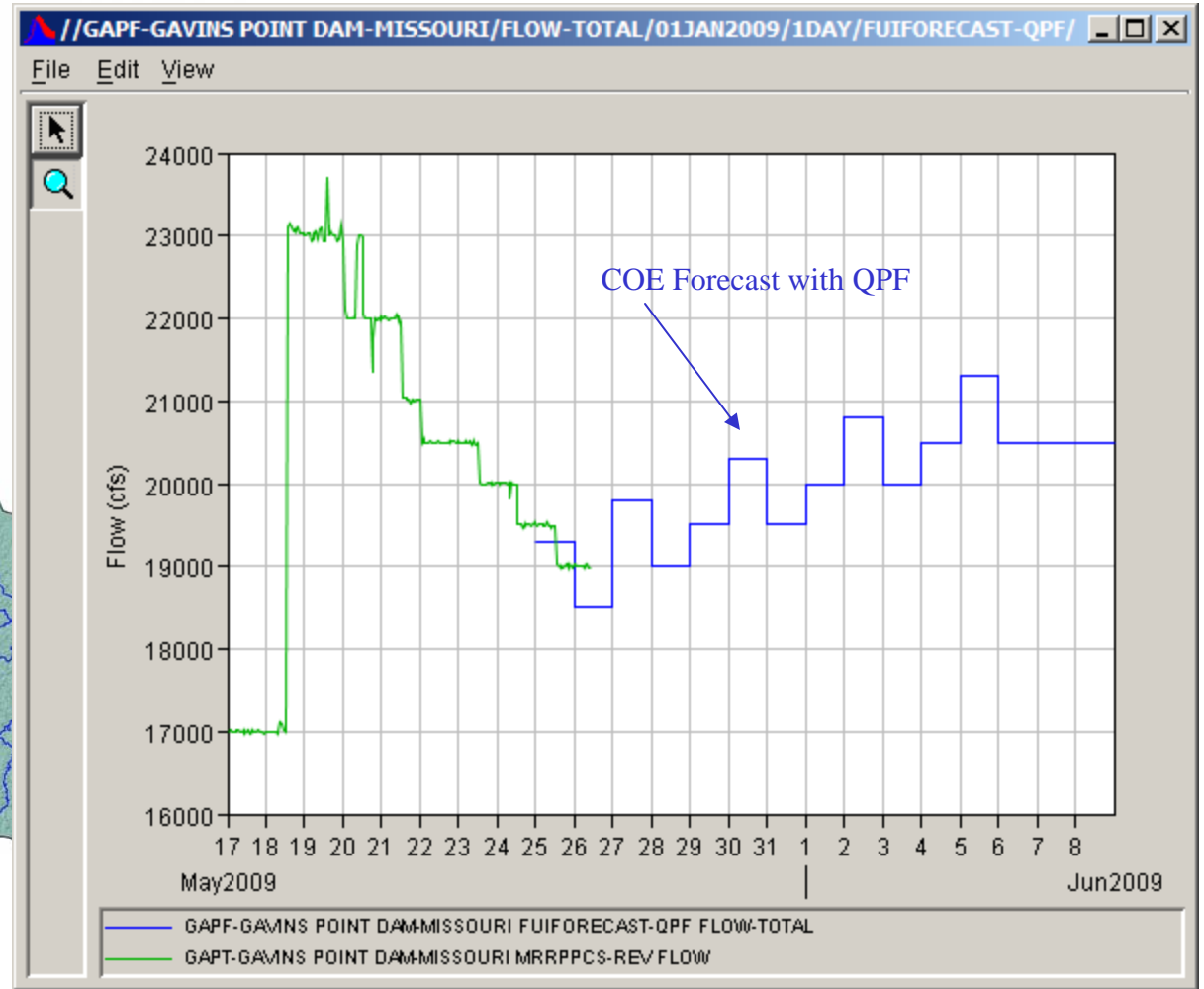
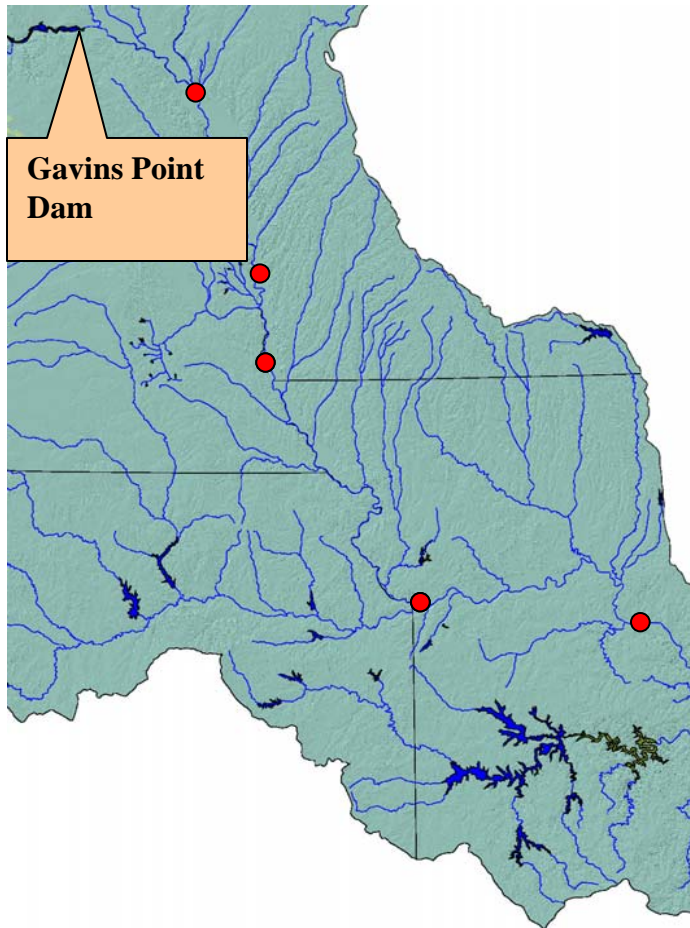
Water Temperature



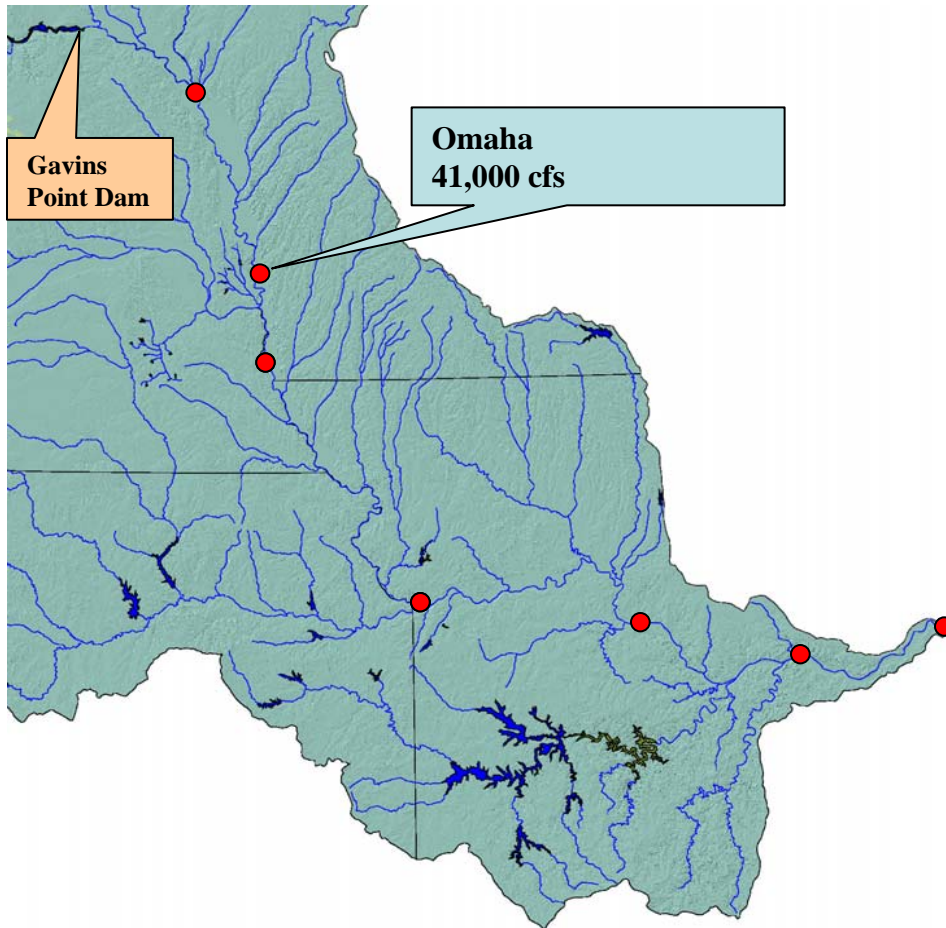
— YKN1-Yankton-Missouri Combined-rev Temp-Water

Gavins Point Dam

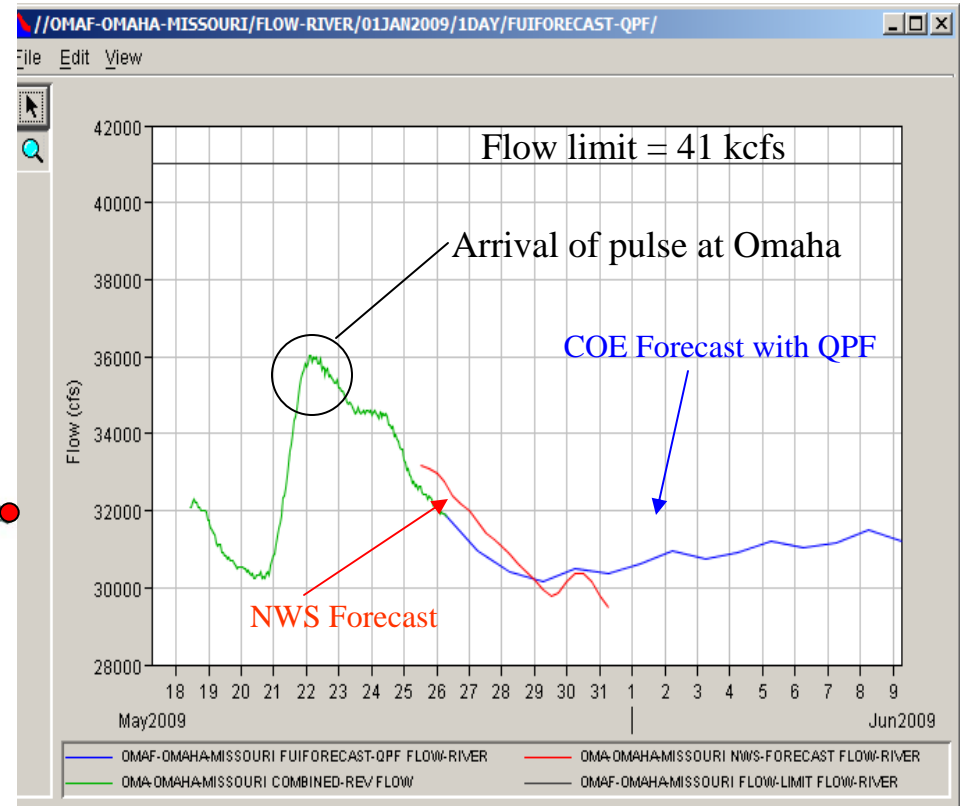
Spring Pulse Initiated on Monday, May 18



Omaha, Nebraska

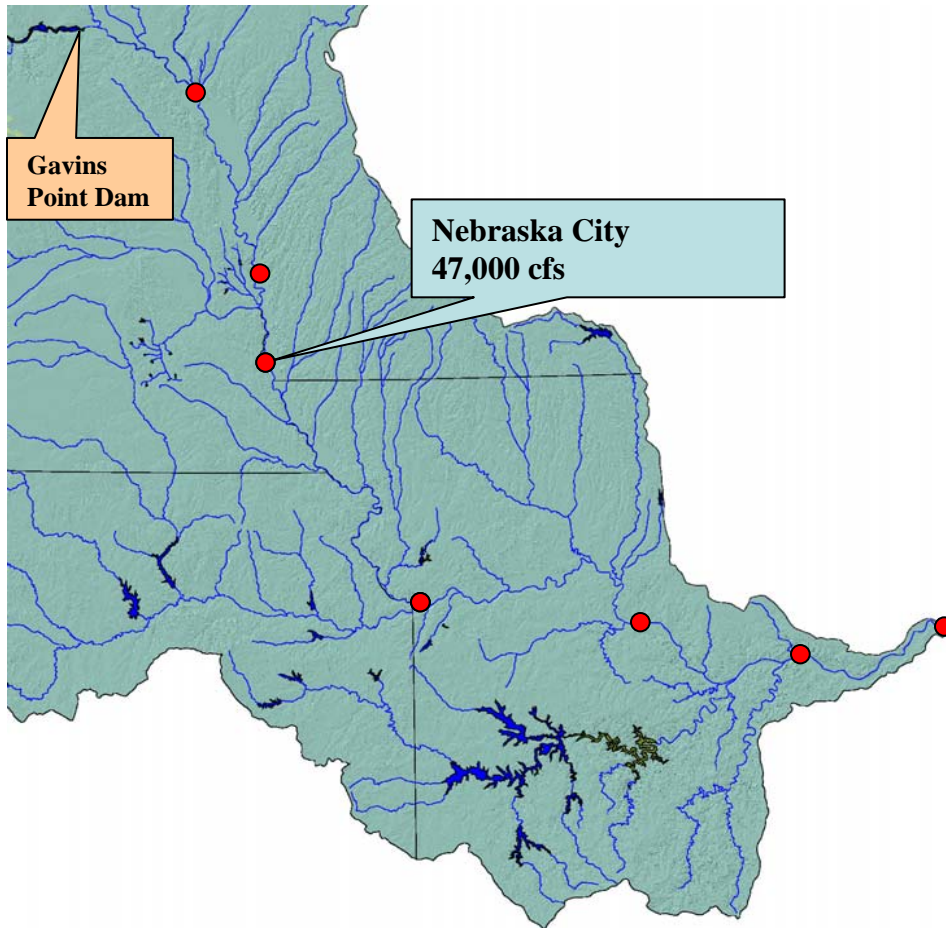


Spring Pulse Initiated on
Monday, May 18

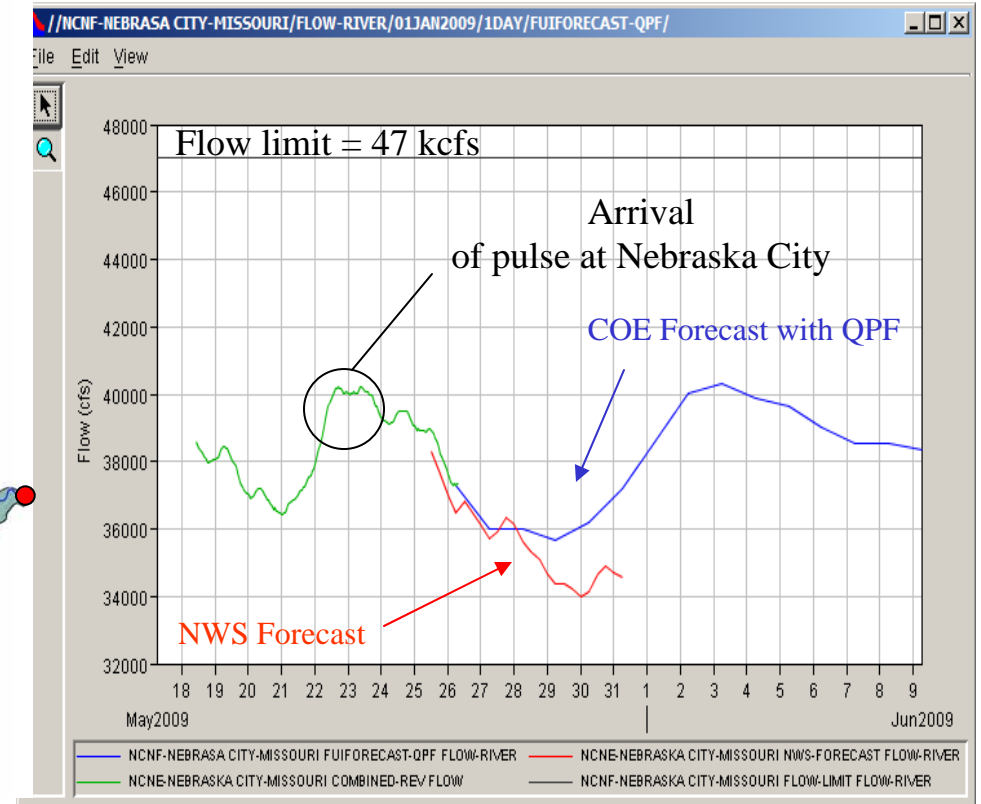


Flood Stage – 29 feet
Approximate Flow – 149,000

Nebraska City, Nebraska



Spring Pulse Initiated on
Monday, May 18

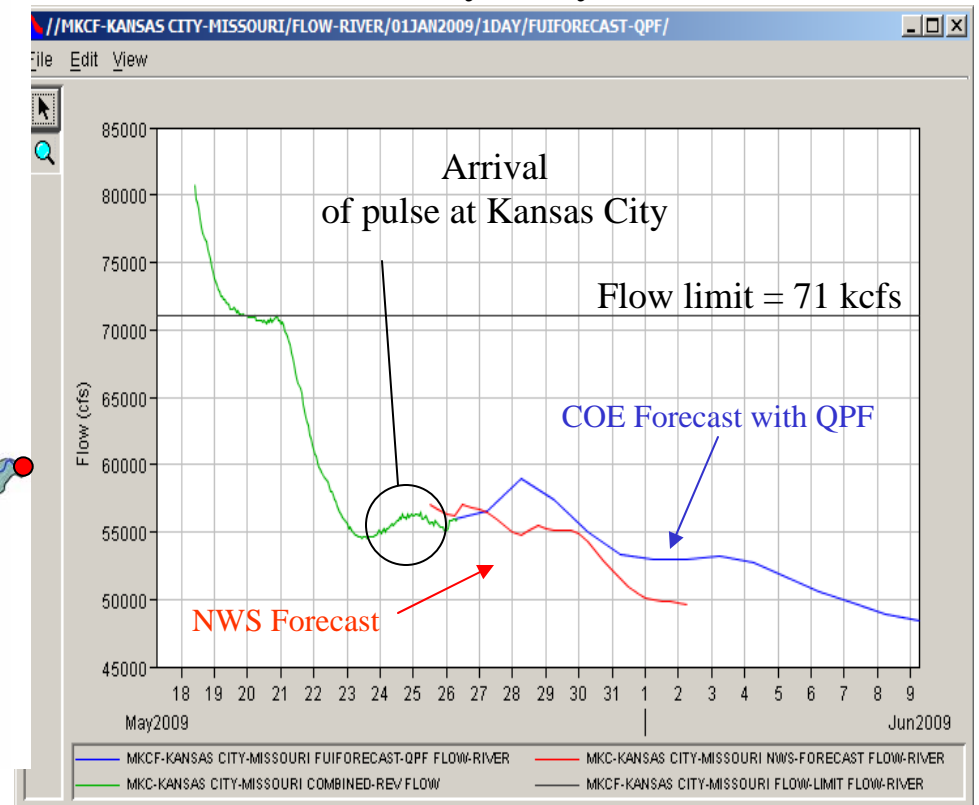
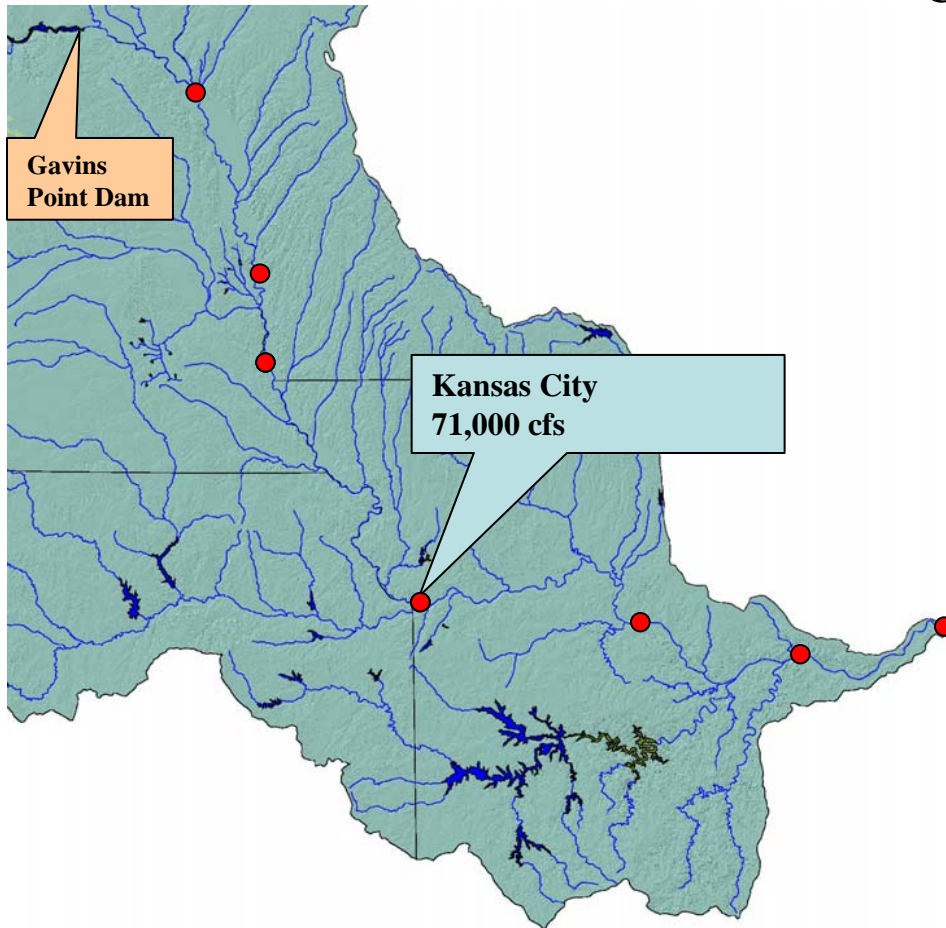


Flood Stage – 18 feet
Approximate Flow – 85,000

Kansas City, Missouri

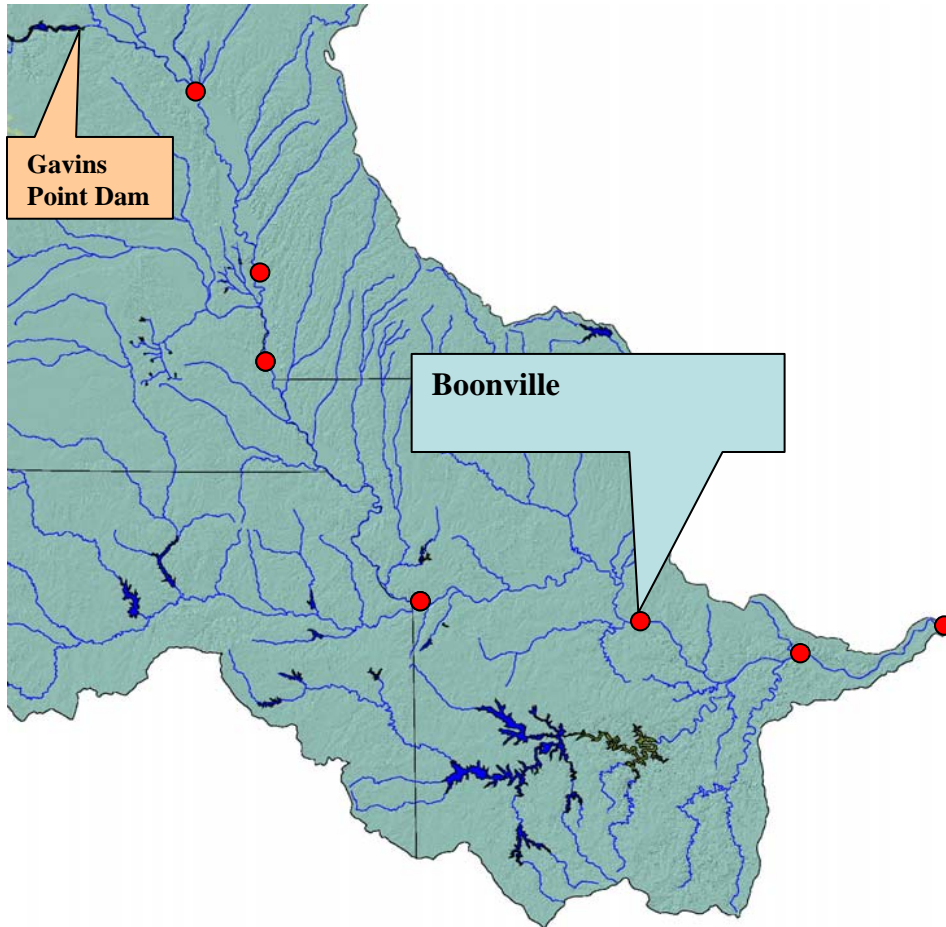
Confluence of Missouri and Kansas Rivers

Spring Pulse Initiated on
Monday, May 18

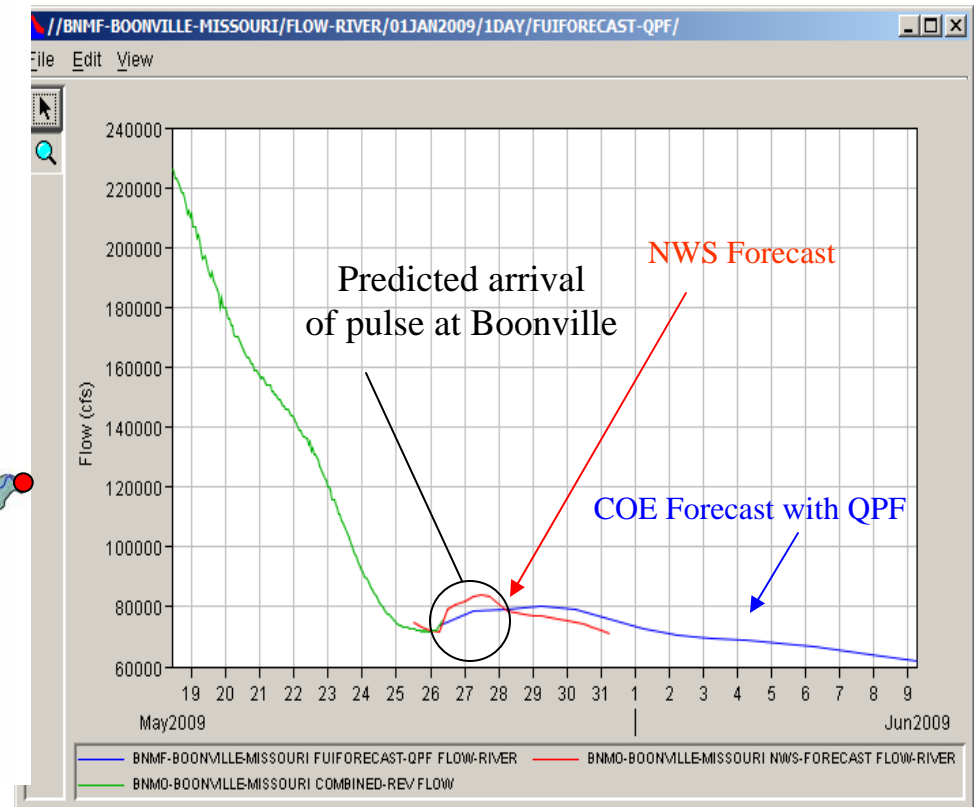


Flood Stage – 32 feet
Approximate Flow – 249,000

Boonville, Missouri



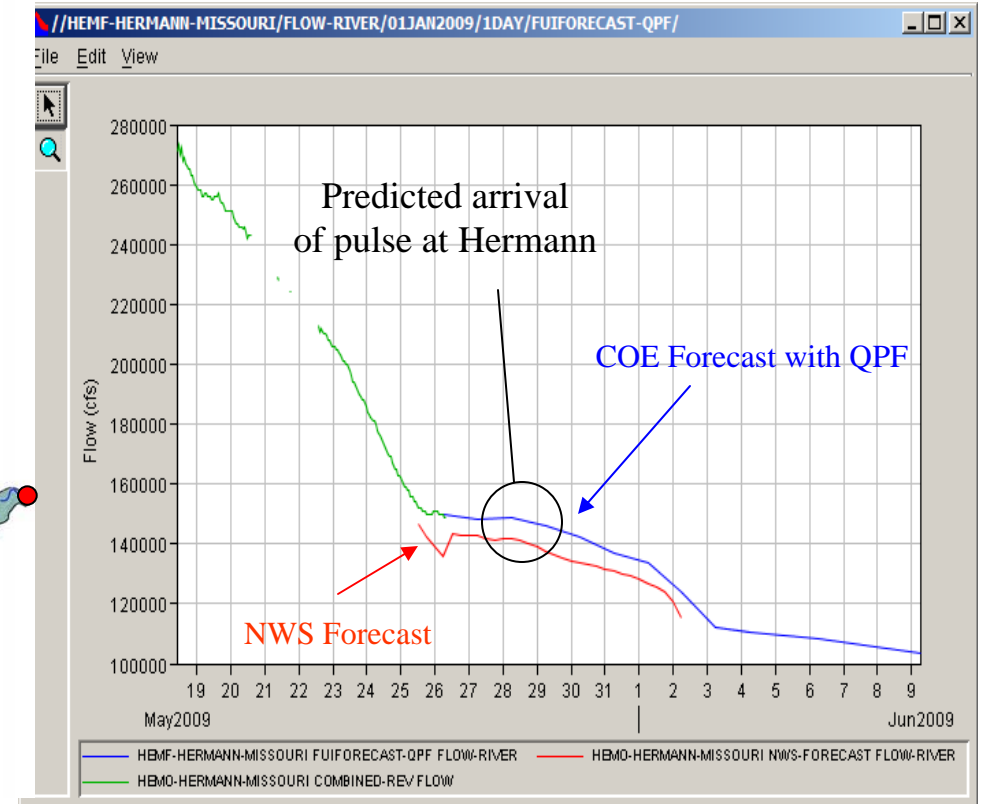
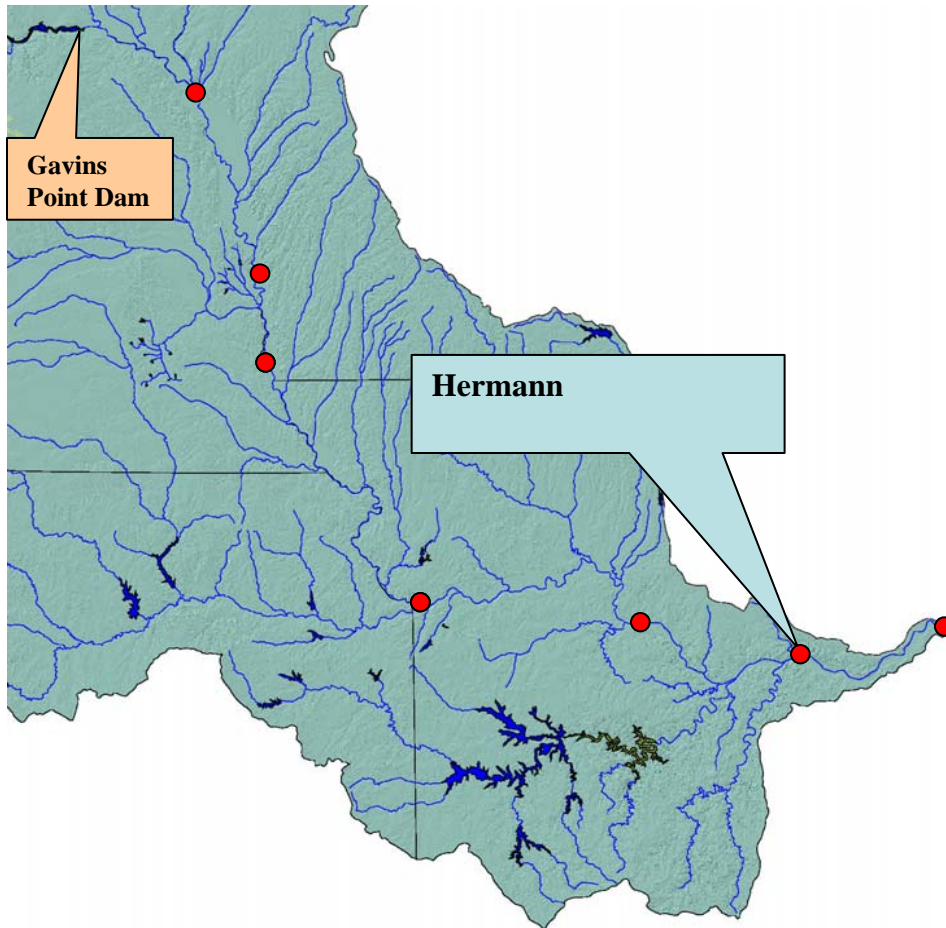
Spring Pulse Initiated on
Monday, May 18



Flood Stage – 21 feet
Approximate Flow – 170,000

Hermann, Missouri

Spring Pulse Initiated on
Monday, May 18



Flood Stage – 21 feet
Approximate Flow – 189,000